

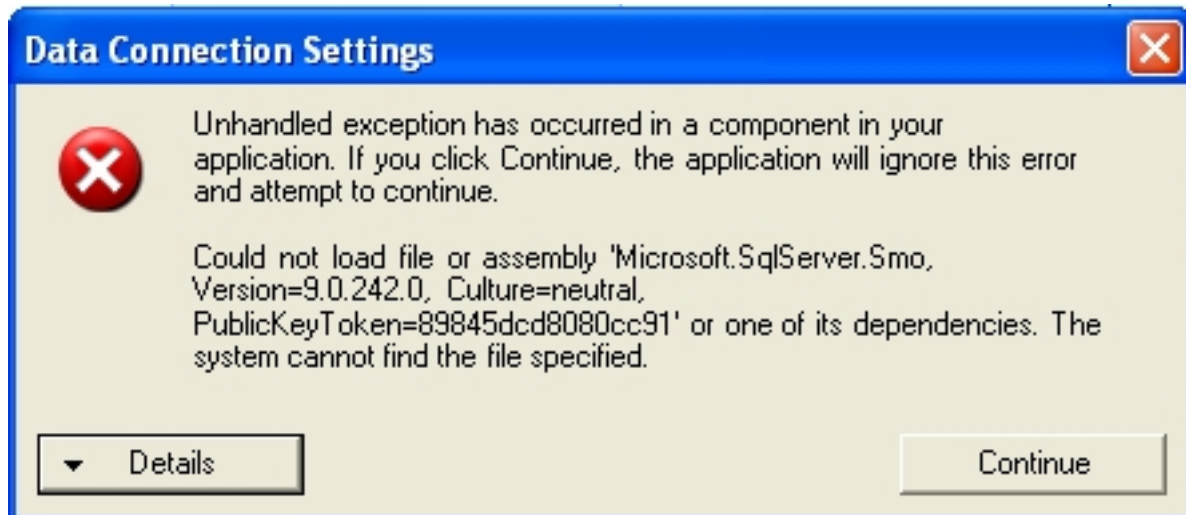
PROBLEM: Error "Unhandled exception has occurred in a component in your application... Could not load

Written by QMS

Thursday, 21 January 2010 21:39 - Last revised Monday, 25 January 2010

SYMPTOMS

The following error is displayed when attempting to refresh your SQL Server dropdown list or when testing your SQL Server connection.



STATUS

Known Issue

RESOLUTION

Ensure the SQL Server client components have been installed on the workstation and/or server experiencing this issue.

You can install the required components from your CD/DVD or you can download and install these components from the 'Install Workstation Components' section at the following Link:

[Detailed Install Notes and Guidelines](#)

MORE INFORMATION

This is an error reported by Quality Link when the required SQL Server client components cannot be found and/or accessed from the local machine.